

608 and 624 Monitors

High Resolution with Ambient-Light Viewing

Expansion-Mesh-Halo Suppression

Excellent Gray Scale, High Brightness Display

The 608 is Tektronix' finest directed-beam viewing monitor. It is extremely well suited for high-performance display applications such as medical and military imaging and electronic instrumentation. The 608's high usable brightness, small spot size, and large screen give excellent direct-viewing capability. When such clarity or brightness is not required, the comparable 624 is recommended. Both the 608 and 624 produce detailed displays that are easy to read in high ambient light and produce quality photographs.

Special CRT design suppresses expansion-mesh halo, which ordinarily causes lower contrast and a "washed out" appearance that interferes with high-brightness gray-scale displays. Expansion-mesh-halo suppression results in a more readable display with subtle and accurate gray-scale images and detailed waveforms. In addition, imaging is critically sharp from corner to corner, particularly on the 608, which uses dynamic focusing.

The wide deflection factor facilitates integration with a broad range of designs. An optional metal bezel lets you use heavy cameras, including those with motorized roll-film backs, without causing distortion, defocus, or light leaks.

In addition, optional full-differential inputs help reject unwanted common-mode signals such as ground noise and power-supply hum. Plus, the 608 can be ordered with gamma-correction for photographic applications. This option produces linear light-output changes with a linear change of Z-axis input, typically within 20 percent.

CHARACTERISTICS

DISPLAY

Type — Flat-faced, electrostatic CRT.

Dimensions — 98 mm x 122 mm (3.9 in x 4.8 in).

Phosphor — GH (P31) is standard.

Spot Size

608: 0.25 mm (10 mils) at 170 cd/m² (50 fL); max brightness — 240 cd/m² (75 fL).

624: 0.3 mm (12 mils) at 170 cd/m² (50 fL).

VERTICAL AND HORIZONTAL AMPLIFIERS

Bandwidth

608: Dc to at least 5 MHz.

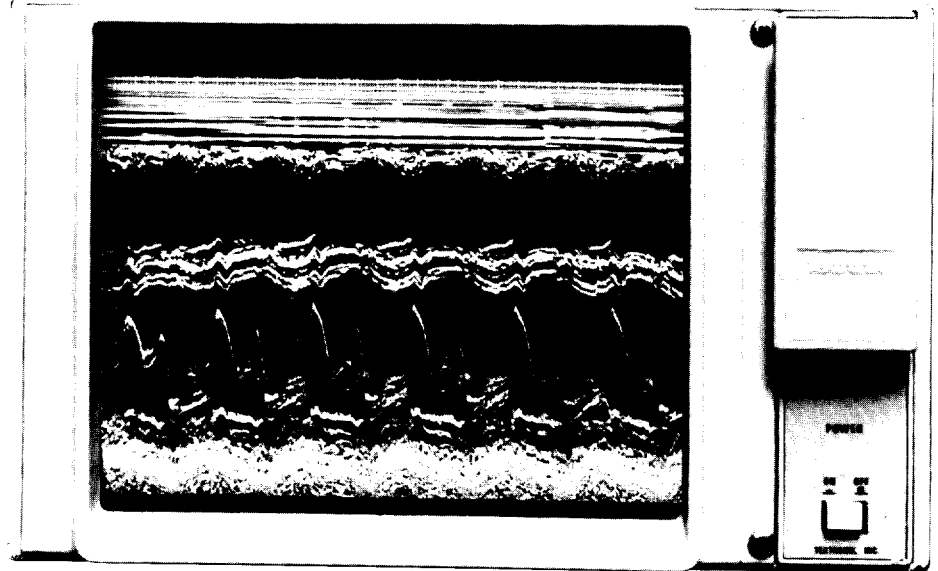
624: Dc to at least 3 MHz.

Deflection Factor — Adjustable 50 mV/div to 0.25 V/div. Option 22 (5X attenuator) extends deflection factor to 1.25 V/div.

Input R and C

608: 1 M Ω paralleled by < 60 pF.

624: 1 M Ω paralleled by < 47 pF.



X-Y Phase Difference

608: One degree max to at least 1.5 MHz.

624: One degree max to at least 1.0 MHz.

Maximum Input Voltage — ± 100 V (dc plus peak ac).

Linear Common-Mode Signal Range (with Option 21) — ± 3 V. (Option 22 extends range to ± 15 V.)

Recommended Source Impedance — ≤ 10 k Ω .

Z-AXIS AMPLIFIER

Z-Axis amplifier permits intensity modulation of the writing beam.

Bandwidth

608: Dc to 10 MHz over usable range.

624: Dc to 5 MHz over usable range.

Sensitivity range is adjustable from 0 to +1 V to 0 to +5 V for full-intensity control.

Input R and C

608: 1 M Ω $\pm 1\%$ and < 60 pF.

624: 1 M Ω $\pm 1\%$ and < 47 pF.

Linear Common-Mode Signal Range (with Option 21) — ± 5 V.

AC POWER

Voltage Ranges ($\pm 10\%$) — 100 V ac, 110 V ac, 120 V ac, 200 V ac, 220 V ac, and 240 V ac.

Line Frequency — 48 Hz to 440 Hz.

Power — 61 W max at 120 V ac.

PHYSICAL CHARACTERISTICS

Dimensions	mm	in
Height (without feet)	213	8.4
Width	133	5.2
Depth	493	19.4
Weight*	kg	lb
Net	8.0	17.6
Shipping	10.4	23.0

INCLUDED ACCESSORIES

CRT graticule (337-2126-02); instruction manual; operator's manual.

ORDERING INFORMATION

608 Monitor

(without handle, feet, or covers) **\$2,690**

624 Monitor

(without handle, feet, or covers) **\$2,740**

Option 01 — Internal Graticule **NC**

Option 09 — UL 544 Component Recognition **NC**

Option 10 — 25-pin Remote Program Connector

X, Y, and Z, Single-ended Inputs **+\$50**

Option 20 — Without ac Supply (± 18 V Unregulated dc Supply Required) (624 only) **-\$30**

Option 21 — Full Differential Inputs (X,Y,Z) **+\$50**

Option 22 — Extended Gain Range 5X Attenuator **+\$35**

Option 23 — Handle, Feet, and Covers (Not Available with Option 28) **+\$80**

Option 24 — Linearized Z-Axis (Gamma Correction) (608 only) **+\$75**

Option 25 — TTL Blanking **+\$75**

Option 28 — Covers Only (Not Available with Option 23) **+\$70**

Option 29 — Metal Bezel **+\$70**

OPTIONAL ACCESSORIES

RACKMOUNTING FOR 606B, 608, 624

Rackmount and Empty Cabinet Kit — Slide-out 19 in rack assembly which mounts a display monitor and an empty compartment horizontally. In the compartment you may put your custom electronic circuitry and connect it to the display, all in one enclosure Order 040-0601-00 **\$335**

Display/Power Module Kit — Allows rackmounting of 606B, 608, and 624 with TM 503 Power Module. Minimizes mechanical design time. Simply design your own electronics using TM 500 Custom Plug-in kits described on page 406. Then plug them in. Fits standard 19 in rack. Order 040-0624-01 ... **\$120**

Rackmounting Kit for 606B, 608, and 624 — Slide-out 19 in rack assembly which rackmounts any two of the above displays side by side. Includes covers and rack slides. Order 040-0600-00 **\$200**

Rackmount-to-Cabinet Conversion — Required to convert a rackmount 606B, 608 or 624 to a cabinet style. Order 040-0602-00 **\$160**

SPECIAL PRICING, TERMS AND CONDITIONS ARE AVAILABLE TO QUALIFY OEMS. CONTACT YOUR LOCAL TEKTRONIX REPRESENTATIVE FOR COMPLETE INFORMATION.